

## OVERVIEW

In March 2019, Glocal Profix USD fund reported a positive return of 0.92%. According to February 2019 macro-indicators, the GDP expanded by 6.5% for the first two months relative to the same period a year ago; CPI increased by 1.3%.

As in January, major portion of the growth came from Construction and services, which went up by 21.6% and 17.5% y-o-y. Wholesale and retail trade grew by 13.1% and 8.6%, respectively. Volume of the industrial output remained unchanged, while electricity production declined by 21%. Exports were down by 11.6%, as were imports – 5.6%; trade deficit widened to USD 336.1mln. The Central bank's refinancing rate remained unchanged at 5.75%; yields on 10-year AMD-denominated Government bonds stood at 9.89%, on par with that of previous month. Armenian dram appreciated by 0.67% relative to USD by 2.25% relative to EUR – 486.44 and 545.30, respectively.

The Fund's return since inception stood at 20.1%, rounding to 12.37% if annualized.

## FUND FACTS

The Fund is registered with the Central Bank of Armenia with participation allowed to qualified investors.

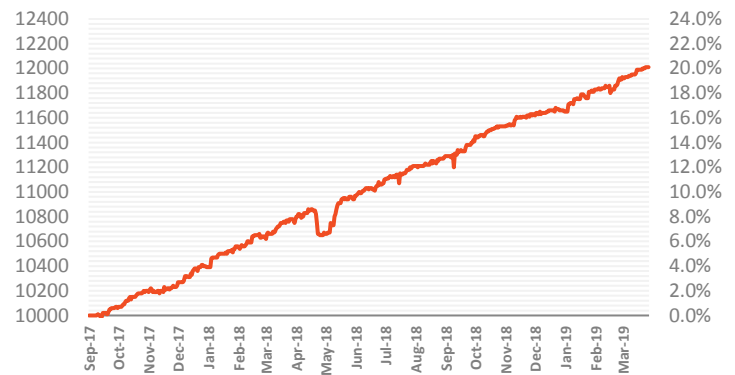
**NAV 31 March 2019**
**USD 12.01**

Type of fund	Fixed income, non-public, open-ended
Date of 1st NAV	1 September 2017
Base currency	USD
Holdings	Corporate Bonds
Refinancing instrument	Repurchase agreements
NAV Calculation	Daily
Expected target return	10% net to investors
Management fee	1.0% on NAV
Performance fee*	10% over a 10% hurdle return
Tax rate	0.01% of NAV
Initial investment, min.	USD 50,000
Subsequent investments, min.	USD 25,000
Distribution policy	Reinvesting
Unit custodian	Armenbrok Investment Company
Assets under management	USD 2.58m
Net assets	USD 893ths
Auditors	Deloitte

\*Performance fee is calculated and charged once on redemption date. Any return over 10% annual compounded hurdle rate is subject to incentive fee deductions

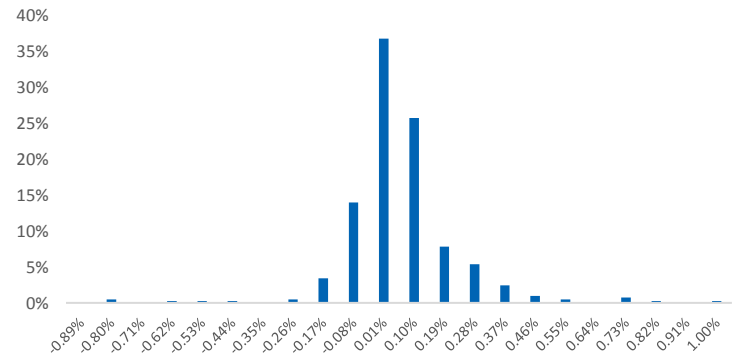
## PERFORMANCE

### Cumulative Performance Since Inception (per \$10K)



Net of management fees and operational costs and taxes.

### Relative Frequency Distribution of Daily Returns



### Returns to 31 March 2019

Average Monthly Returns	0.94%
Q4 2017	3.38%
Q1 2018	3.65%
Q2 2018	2.60%
Q3 2018	2.89%
Q4 2018	2.46%
Q1 2019	3.00%
Since Inception	20.10%
Inception Annualized	12.37%
<b>March 2019</b>	<b>0.92%</b>

### Risk Measures

Standard Deviation of Returns (monthly)	0.75%
Sharpe Ratio (annualized)	3.30
Largest Drawdown	1.93%
% Gain Periods	79.33%
Value at Risk – 95% (monthly)	-0.30%

## Portfolio Allocation breakdown as of March 31, 2019

By Sector	
Banks	64.92%
Other Financial Institutions	34.81%
Cash	0.28%
By Currency	
USD	99.00%
AMD	1.00%

Weighted by fair value

The share of USD denominated corporate bonds in the portfolio equaled to 98.96%, with the remaining allocated between AMD bonds and cash – 0.76% and 0.28%, respectively.

### Statistical data

Average YTM	5.75 %
Average Coupon	6.12 %
Average Maturity	1.34 Years

## DISCLAIMER

**The data, views and forecasts in this document is for information purposes only and shall not be regarded as an offer, solicitation or recommendation for an investment.** PAST PERFORMANCE IS NO GUARANTEE OF FUTURE RESULTS. All investments involve risks including the risk of possible loss of principal. The market value of a Fund's portfolio may decline as a result of a number of factors, including adverse economic and market conditions, prospects of securities in the portfolio, changing interest rates, and real or perceived adverse competitive industry conditions. The Fund invests in securities and other investments that may be illiquid, which hold the risk that the securities will not be able to be sold at the time desired by the Fund. The Armenian securities markets have substantially less trading volume than the securities markets of OECD countries. Additionally, the capitalization of the Armenian securities markets is highly concentrated. This combination of lower volume and greater concentration in the Armenian securities markets may create a risk of greater price volatility than in the securities markets of developed economies.

The views and forecasts contained herein are those of the GLOCAL team based on information that they believe to be reliable. These opinions may change over time.